

Correlation of Variables for Program Success and First Time SEE

Brian Anderson, BSN, RN, SRNA and Derik Gotay, BSN, RN, SRNA

Alescia DeVasher Bethea, PhD, CRNA, APRN, MTSa; Janice Lowden-Stokley, PhD, RN, AHU; Carolyn Fore PhD, RN, AHU
AdventHealth University Doctor of Nurse Anesthesia Practice (DNAP) Program

Problem

- Nurse anesthesia programs are difficult and have limited seat availability
- Selection and admission requirements have been established, but program admission does not guarantee graduation
- Preadmission variables may identify applicants most likely to succeed within the program and ultimately the NCE

Literature Review

- For every one-point increase in cGPA, the chance of successfully completing a graduate nursing program increases up to 7.12 times and students were 4.2 times less likely to experience academic probation
- For every one-point increase in sGPA, students were 3 times less likely to experience academic probation
- An average cGPA of 3.25 and undergraduate nursing GPA of 3.00 predicted a 99% success rate for master's nursing students
- cGPA of 3.36, sGPA of 3.30, and undergraduate nursing GPA of 3.36 significantly correlate to student success
- Pre-admission GPA of 3.25 showed high probability of successfully passing the NCE
- SRNAs with an average program cGPA of 3.64 or a program sGPA of 3.53 are associated with higher scores on NCE than SRNAs with an average program cGPA of 3.37 or a program sGPA of 3.14

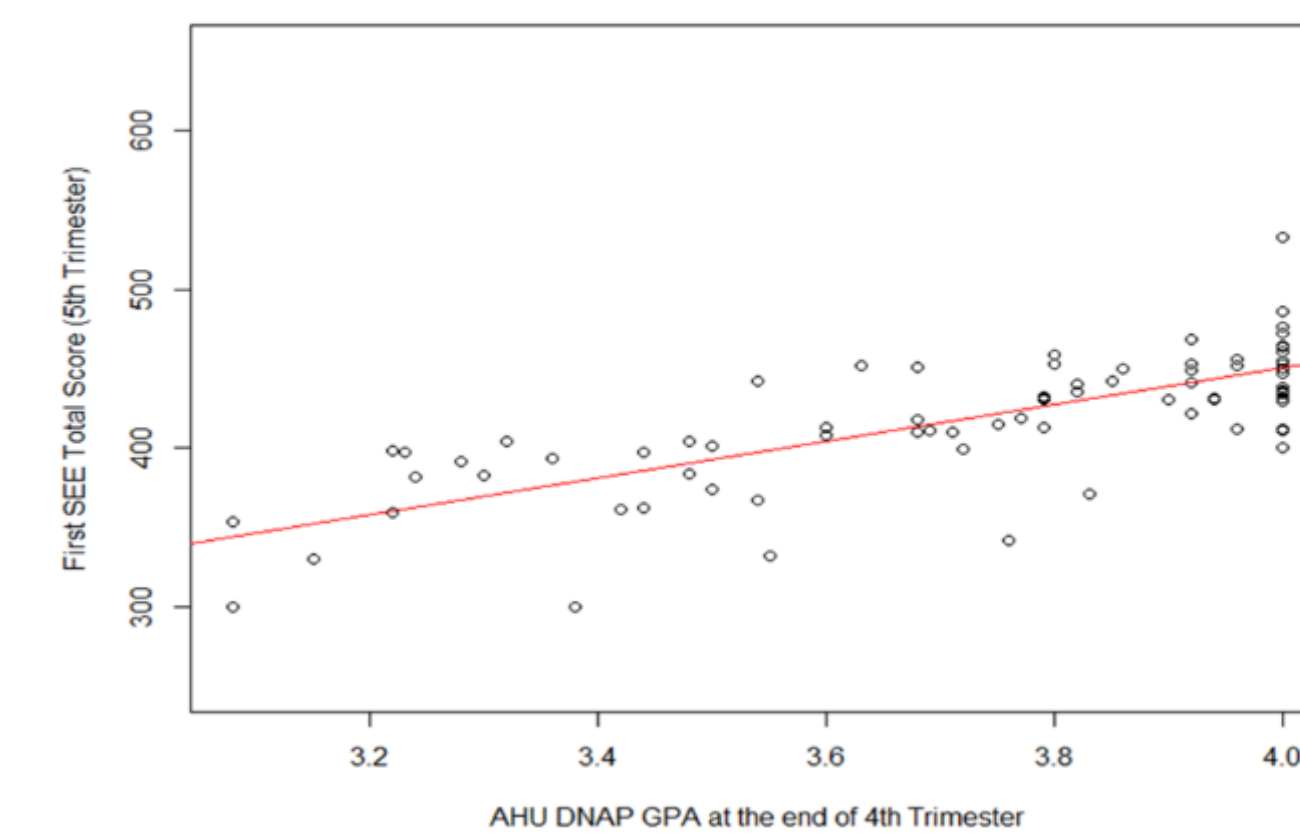
Methods

- Data was collected about 80 (N=80) AHU DNAP Program SRNAs from the graduating cohorts of 2021 through 2023
- The Spearman's Rho Correlation Test was performed on cGPA, sGPA, total GRE score, and HSRT overall score to determine if there was a predictive correlation between the NAPGPA and SEE total score
- Using one standard deviation (SD 35.4) below the minimum SEE total score that correlated to a passing performance on the first-time NCE attempt (443.1), a SEE total score of 407.7 was used as a benchmark for academic recommendations

Results

- This study found four statistically significant correlations:
- Moderate positive relationship between cGPA with NAPGPA ($r = 0.437, p < 0.001$)
 - Moderate positive relationship between cGPA with SEE total score ($r = 0.359, p = 0.001$)

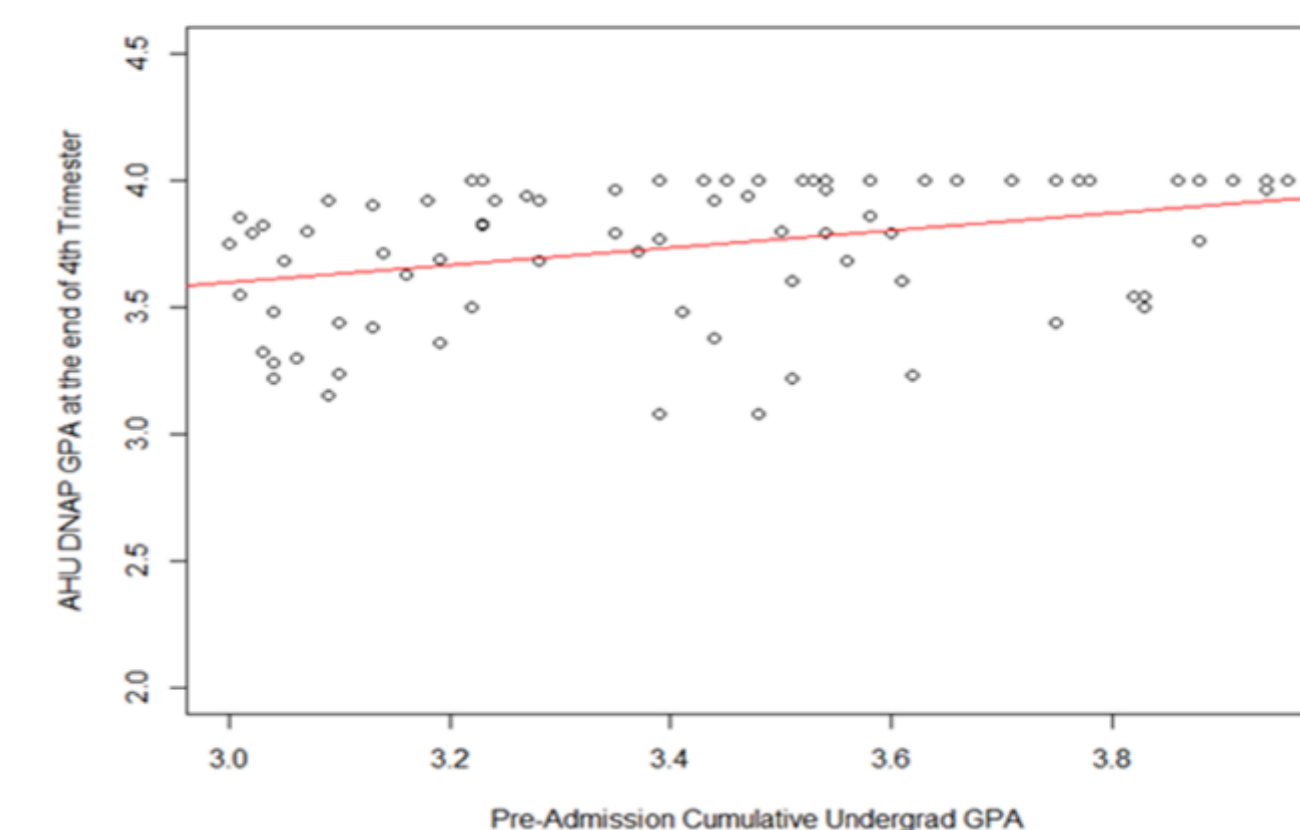
NAPGPA with SEE Total Score



More Results

- Moderate positive relationship between sGPA with SEE total score ($r = 0.329, p = 0.015$)
- Strong positive relationship between NAPGPA and SEE total scores ($r = 0.76$ and $p < 0.001$)

CGPA with NAPGPA



Discussions & Recommendations

- Increase the minimum cGPA requirement from 3.00 to 3.10
- Add sGPA into the pre-admission requirements with a minimum sGPA of 3.10
- Student with a NAPGPA below 3.60 be placed on a PIP
- Do not use the HSRT as a replacement for the GRE
- Consider minimal weighting of the total GRE score in the admission rubric
- Limitations: Small sample size, data gathered from only one university

Conclusions

- These recommendations may lead to changes in AHU's DNAP Program as pre-admission criteria to help select candidates who may have the highest probability of completing the program and passing the NCE on the first attempt and/or to changes in AHU's DNAP program's progression requirements

Acknowledgements

Thank you to our scholarly project team and Dr. Tho Nguyen